

# AprilAire®

## Humidifier

### SPECIFICATION SHEET

# Model 800/800LC

Steam Humidifier

Steam Capacity Gallons/Day	Voltage	Hertz	Current Draw	
			Amps	kW
11.5	120V	60 Hz	11.5	1.4
16.0			16.0	1.9
20.5	208V	60 Hz	11.5	2.4
30.0			16.0	3.3
23.3	240V	60 Hz	11.5	2.8
34.6			16.0	3.8



SPECIFICATIONS	
Unit dimensions	10 1/8" W x 20 7/8" H x 7 1/8" D
Weight – unit only/ operating weight	23 lbs 27 lbs.
Drain water temperature	Drain water not to exceed 140°F. Tempered with cold fill water
Installation accessories included	6 ft. of commercial grade steam hose, 10 ft. drain hose, clamps/hardware, and dispersion tube
Supply water conductivity	125 to 1250 µS/cm
Supply water pressure range	25 to 120 psi
Supply/Drain connection	Supply: 1/4" copper compression fitting Drain: 3/8" for flex hose
Warranty	5 Years

### PRINCIPLE OF OPERATION

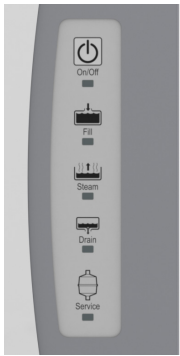
The AprilAire steam humidifier delivers humidity to a home's conditioned space through the use of the HVAC system ductwork. The humidifier operates utilizing electrode technology: current flowing between two electrodes in the disposable steam canister boils water to generate steam. Drain and fill valves in the humidifier work together to maintain the correct water level in the canister to satisfy the demand for humidity based on the electrical conductivity of the water.

MODEL SELECTION BASED ON WATER CONDUCTIVITY			
Conductivity	Hardness	Water Characteristic	Recommended Model Installed at 208/240VAC
75-100	0-3	Naturally Soft	Model 800LC
100-300	3-9	Naturally Soft	Model 800LC
300-500	9-15	Slightly Hard	Model 800
500-650	15-20	Moderately Hard	Model 800
650-850	20-25	Hard	Model 800
850-1250	25-36	Very Hard	Model 800
Above 1250	Above 36	Extremely Hard	Installation Not Recommended



## FEATURES

- **Internal control board** – Manages the operation of the humidifier to provide full capacity at 11.5 or 16 amps..
- **Superior dispersion and absorption** – “Dispersion tubelets” deliver the hottest, driest steam to the air, preventing condensation in the duct.



- **Display panel** – Illuminated LEDs show unit operation (fill, drain, steam), diagnostics and when the canister needs to be replaced.
- **Water level sensor** – Manages the water level in the steam canister to prevent overflowing.
- **Back flow protection** – Air gap in fill cap prevents pressure build up.

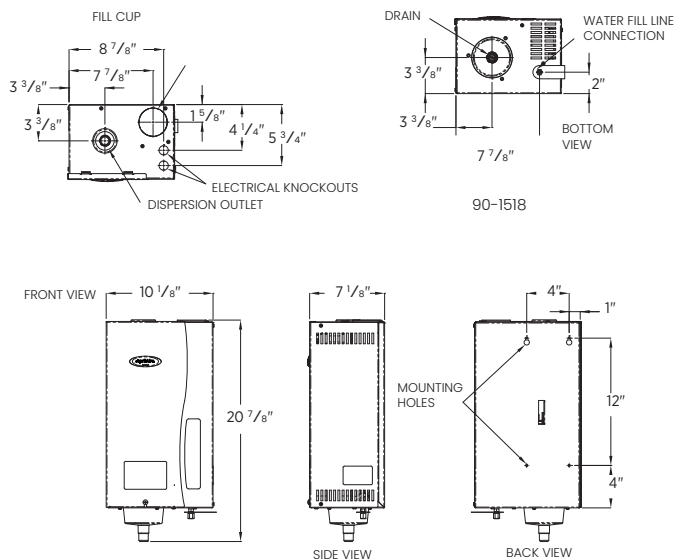
- **End-of-Season drain** – After 72-hours without a humidity call, unit automatically drains and enters standby mode.
- **Operating time monitor** – Accumulates actual humidifier run time to activate periodic drain and fill cycles and monitors the life of the canister.
- **Drain water tempering** – Unit uses cold inlet water to temper canister drain water, protecting PVC piping and condensation pumps.
- **Canister replacement** – Once per humidifier season under normal conditions. Unit alerts when canister should be replaced; canister life will vary based on water quality.

MODEL 62 SPECIFICATIONS	
Electrical	External
Input voltage and current	Voltage: 24 VAC +/-20% Current: 80mA (nominal)
Output	Dry contact, normally open
Control	External
Control range	15%–45% RH
Accuracy	+/-3% RH
Differential	3% RH

### Model 62 Automatic Digital Humidifier Control



- Large backlit display
- Continuous 24/7 RH monitoring
- Automatic control with outdoor sensor
- Built-in blower activation
- Status lights



### Model 4991 Steam Distribution Tube, Model 4974 Drain Tube, Model 4973 Steam Hose, and Model 4001 Saddle Valve



- Stainless steel design won't corrode
- Steam Tubelets™ designed to distribute steam over a wide area in the duct and direct any condensed moisture back into the steam hose.