

MODEL ZD - Zone Damper

The ZD Dampers are sturdy extruded aluminum frame, parallel blade dampers with 3" blades for long life and silent operation. Each blade pivots on a self-lubricating bushing for smooth quiet operation and long life. The ZD comes in two styles, Side Mount where the motor and end plate are on the shorter dimension and the Bottom Mount where the motor and end plate are on the longer dimension. The ZD damper is available with different power actuators. All dampers can be adjusted to a minimum position.

Motor	Side Mount	Bottom Mount	Features
24VAC Spring Return	ZDSwwhh	ZDBhww	Normally Open Spring Return with Minimum Position. Can be converted to Normally Closed.
24VAC Power Open-Close	ZDSMwwhh	ZDBMhww	Built-In LED Position Indicators, Adjustable Minimum Position Stops
12VDC Plug-In	ZDSPwwhh	ZDBPhww	Plug-In Motor, dual jacks, LED position indicator, adjustable minimum position and includes 25' modular cord.

NOTE: On higher pressure/velocity systems over 0.5"S.P. use only power open-close or plug-in dampers.



24VAC - 3 Wire Power Open-Closed and for Modulating By-Pass

Model ZDSM



Model ZDBM



Model ZDSP



Model ZDBP

Plug-In Dampers used with Plug-In Zoning Panels Only. WIRING INCLUDED

24VAC - 2 Wire Spring Return Dampers



Model ZDS - Side Mount



Model ZDB - Bottom Mount

	8	10	12	14	16	18	20	22	24
HEIGHT	283.00								
Model ZDS - Side Mount	285.00	299.00	320.00	340.00	358.00	369.00	402.00	465.00	500.00
W	302.00	312.00	332.00	344.00	352.00	364.00	385.00	421.00	473.00
I	309.00	321.00	335.00	344.00	358.00	375.00	411.00	442.00	492.00
D	313.00	329.00	340.00	352.00	367.00	385.00	411.00	440.00	496.00
T	322.00	335.00	350.00	358.00	373.00	387.00	411.00	421.00	465.00
H	326.00	352.00	362.00	373.00	387.00	405.00	420.00	440.00	473.00
	337.00	358.00	373.00	387.00	405.00	420.00	440.00	473.00	500.00
	348.00	364.00	387.00	406.00	410.00	422.00	467.00	492.00	508.00
	354.00	377.00	396.00	421.00	432.00	457.00	471.00	496.00	515.00
	373.00	383.00	412.00	433.00	442.00	487.00	498.00	521.00	534.00
	387.00	417.00	424.00	444.00	455.00	499.00	512.00	541.00	564.00
	396.00	423.00	434.00	451.00	469.00	512.00	524.00	551.00	579.00
	400.00	433.00	444.00	457.00	489.00	523.00	539.00	568.00	586.00

MODEL RD - Round Damper

The Round Damper series is a single blade damper in a round spiral duct. This damper is complete with motor and can be ordered as a 24VAC spring return (2 Wire), Model RDS, or power open-power closed (3 Wire) Model RDM or with the NEW 12VDC Plug-In Motor, Model RDP. The RDP is used only with the NEW Plug-In zoning panels. These model numbers are followed by the size diameter in inches as shown below. These actuators are the same as on the ZD dampers above. The RDP must be used with the NEW Plug-In Zoning Panels on page 2. The RDM is more often used for by-pass control. The RDS is a spring return damper used for zoning and is shipped normally open however can be easily converted to normally closed. For high pressure/velocity systems over 0.5"S.P. use the RDP or RDM dampers.

ALL RD DAMPERS ARE THE SAME LIST PRICE



RDP

Model Size	List Price
RDP 04	196.00
RDP 05	198.00
RDP 06	202.00
RDP 07	205.00
RDP 08	212.00
RDP 09	215.00
RDP 10	225.00
RDP 12	234.00
RDP 14	244.00
RDP 16	256.00
RDP 18	283.00
RDP 20	318.00



RDM

Model Size	List Price
RDM 04	196.00
RDM 05	198.00
RDM 06	202.00
RDM 07	205.00
RDM 08	212.00
RDM 09	215.00
RDM 10	225.00
RDM 12	234.00
RDM 14	244.00
RDM 16	256.00
RDM 18	283.00
RDM 20	318.00



RDS

Model Size	List Price
RDS 04	196.00
RDS 05	198.00
RDS 06	202.00
RDS 07	205.00
RDS 08	212.00
RDS 09	215.00
RDS 10	225.00
RDS 12	234.00
RDS 14	244.00
RDS 16	256.00
RDS 18	283.00
RDS 20	318.00

MODEL RT Round Take-Off Dampers

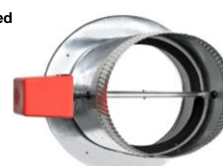
The Round Take-Off Damper is a combination adhesive take-off collar and motorized damper. The RT has three models for each different motor. The RTP is our exclusive plug-in damper motor which includes 25' of modular cord and is used with only the plug-in zoning panels. The RTM is the 24V, power open-closed, three wire motor, also used as a motorized by-pass. The RTS is the 24V spring return motor. All dampers operate as the RD dampers above except are in a take-off collar. The adhesive seal provides an air tight seal to the duct to eliminate leakage.



Model Size	List Price
RTP 06	\$209.00
RTP 08	\$215.00
RTP 10	\$225.00
RTP 12	\$230.00
RTP 14	\$240.00



Model Size	List Price
RTM 06	\$209.00
RTM 08	\$215.00
RTM 10	\$225.00
RTM 12	\$230.00
RTM 14	\$240.00



Model Size	List Price
RTS 06	\$209.00
RTS 08	\$215.00
RTS 10	\$225.00
RTS 12	\$230.00
RTS 14	\$240.00

Model RR Retro-Round™ Insertable Dampers

The Retro-Round Insertable Dampers make it easy to install dampers into any rigid metal duct work. Just slit a 1" wide opening in the center of the round duct, slide in the RRP and secure with the screws provided. The Retro-Round is available with two different motors. The RRP uses a DC motor and wires using modular plug-in cords. The RRM is a 24VAC version using standard thermostat wire. Both motors have position indicating LEDs.

Model RRP - RetroRound Plug-In Damper

The RRP uses a low current DC motor and wires using a 25' modular cord, included with each damper as well as an additional port to connect additional RRP dampers to the same zone. The RRP must be controlled by the MMP2/3, H32P, MDP3 and MZP4 Panels. Up to 10 dampers can be used per zone.

Plug-In Model	24V PO/PC Model	List Price
RRP04	RRM04	\$ 138.00
RRP05	RRM05	\$ 142.00
RRP06	RRM06	\$ 146.00
RRP07	RRM07	\$ 148.00
RRP08	RRM08	\$ 150.00

Model PIW25 and PIW50

Additional 25' or 50' length of modular cord with connectors and coupler for longer damper runs using any Plug-In Damper Motor.

LIST PRICE	PIW25	\$13.00
	PIW50	\$24.00

Model RRM - Retro-Round Motorized Damper

The RRM uses the 24VAC low current damper motor, the same motor used on the ZDM and RDM Dampers, and can be controlled by any zoning panel that would power 24V dampers. Up to 5 dampers can be powered using a 40VA transformer. When additional dampers are needed use a larger VA transformer or use the 4PDR to isolate transformers.



ZONE CONTROL PANELS WITH COLORED WIRING TERMINALS

Model MMZ/MMP

MASTERZONE™ 2 and 3 Zone Single Stage Panel



The Mini-MasterZone 2 and 3 Zone panels are an economical 2 and 3 zone only panel for single stage heating and cooling systems. Compatible with any 4/5 wire (Y-G-R-C-W) thermostats, these panels are the simplest zoning system yet and includes optional Fan ON In Heat (only on 3 Zone panel), needed with Hydro-Air and electric Heating systems. Built-in LEDs indicate system status and indicators to show each zone's call. All panels feature NEW color coded screw-less terminal blocks making wiring quick and simple. The MMZ3 controls any 24VAC 2 or 3 wire zone damper and the MMP2 and MMP3 controls only the New Plug-In Dampers.

When any zone calls for heating (or cooling), the panel accepts the first call, opens the damper to the calling zone, closes the dampers to the satisfied zones and activates the HVAC Unit. Any calls for the same mode, heating or cooling, will have their zone damper open and receive conditioned air. If an opposite call is made during this time, it will be held until the first mode calling is either satisfied or a maximum of 20 minutes expires, which then after an approximate 2 minute purge time, will switch over and satisfy the opposite call. Once all heating and cooling calls are satisfied the panel will accept fan only calls and cycle the dampers to supply air only to those zones with the Fan switch in the ON position. If there are no heat, cool or fan only calls, all dampers return to the open position. The 3 Zone Control Panels also has brownout protection, a built-in Re-Boot button for system reset and a built-in circuit breaker to prevent the board and transformer from shorts.

List Price	For Use with 24VAC Dampers Motors		For use with Plug-In DC Damper Motors Only	
	MMZ3	\$238.00	Panel Only for use with 24VAC Motors	MMP2
MMZK	\$289.00	System Kit (Includes ZPS and T24 Transformer)	MMP2K	\$252.00 NEW 2 Zone Kit (Includes ZPS and T24 Transformer)
			MMP3	\$264.00 Panel Only for use with Plug-In Motors Only
			MMPK	\$316.00 System Kit (Includes ZPS and T24 Transformer)

Model H32 and H32P

2 and 3 Zone Control Panel - Heat Pump, Dual Fuel and Conventional 2 Heat/2 Cool



The NEW H32 and H32P are a universal zone control panel for single stage and two stage heating and/or cooling, heat pumps and dual/fossil fuel heat pumps. Utilizing the same optimal zoning functions as in the other zone panels the H32/H32P has a set of built-in DIP switches that can set the desired functions for the type of HVAC Equipment Outputs and zone thermostats used. These panels use optional Outdoor Air Sensor to provide changeover points for dual/fossil fuel applications and Zone Plenum Sensors to provide capacity control of the equipment.

The H32 is used with any 24VAC two or three wire damper motor. The H32P is used exclusively with the New Plug-In Dampers. Up to 10 plug-in dampers can be controlled from one zone.

List Price	For use with 24VAC Damper Motors		For use with Plug-In DC Damper Motors Only	
	H32	\$283.00	Panel Only	H32P
H32K	\$334.00	System Kit	H32PK	\$389.00 System Kit (Includes OAS, ZPS and T24 Transformer)

NEW Model MDP3 and MDPA Adder

Digi-Zone™ 2 and 3 Zone Expandable Universal Zone Control Panel



For use with Plug-In Dampers ONLY

The NEW Digi-Zone, Model MDP3, Control Panel will control 2 or 3 Zones on any HVAC System, up to 3 Stages of Heating and 2 Stages of Cooling. The MDP3 will also control Heat Pumps and Dual Fuel as well as many geothermal heat pumps. The digital display is a menu driven screen that guides the installer through the settings for each type of system as well as accurately sets the timings and sensor temperature settings. The MDP3 also has innovative staging control based time or leaving air temperature. Other features include ZONE-A-LONE™ system setback and expandable to 103 Zones, the most in the industry. To add zones, use the MDPA, which is a 2 zone adder. An MDPA is required for each additional 2 zones. Example for 12 Zones order 1-MDP3 and 5-MDPA which is capable of 13 zones. A specific 8 conductor modular cord is supplied with each adder to connect from one panel to the next.

Model	List Price	System Kit w/Transformer and Sensors	Model	List Price
MDP3	\$404.00	MDPK	\$455.00	
			MDPA	\$210.00

Model MZS4/MZP4

MASTERZONE™ Zoning System- 4 Zone All-In-One Control Panel



The MasterZone Control Panel is the only panel needed to provide multiple zone control of any forced air heating and cooling system. The MZS4 panel is compatible with any type of thermostat and controls up to 3 stages of heating and cooling as well as heat pumps. It is expandable up to ten (10) zones by adding the MZA ZONE-ADDER panels. Built-in LEDs provide continuous system operation readout and color coded screw less terminal blocks provide easy wiring. Standard single stage thermostats can be used to control two-stage and heat pump systems. Built-in second stage time or the number of zones calling brings on the second stage and the ZPS sensor provides capacity protection control for the HVAC Unit. The MZ panels have a built-in self resetting fuse to protect the transformer. Other features are zone indicator lights, adjustable heating high limit temperature for ZPS sensor, override button for time delay and a re-boot button for quick re-start.

The MZ panels operate the HVAC Unit based on a first call from any zone. Once a zone is calling for a particular mode, the MZ panels will not allow an opposite call for a maximum period of 20 minutes or possibly less based upon the time the unit was running in that mode when the opposite call was made. This "Intelligent Changeover Feature" is a unique feature of the MZ panels.

Model	For use with 24VAC Damper Motors		For use with Plug-In DC Damper Motors Only	
	LIST PRICE		Model	LIST PRICE
MZS4	\$537.00	Panel Only	MZP4	\$568.00 Panel Only for use with Plug-In Motors Only
MZSK	\$588.00	System Kit (Includes ZPS and T24 Transformer)	MZPK	\$618.00 System Kit (Includes ZPS and T24 Transformer)
MZA2	\$225.00	Two-Zone Adder (use with MZS4 Only MAX 3 Adders for 10 Zones)	No Adder for MZP4. For systems over 4 Zones use MDP3 and MDPA.	

Model OAS and ZPS Outdoor and Plenum Air Sensors

The Zone Plenum Leaving Air Sensor is a duct mounted sensor for the supply air. The ZPS can be used with any MasterZone panel. It can be ordered separately with each panel or it is included with each system kit. The ZPS senses the supply air temperature in the plenum to protect the heat exchanger and cooling coil from extreme plenum temperatures due to a bypass or low air flow conditions. The Outdoor Air Sensor, Model OAS, is used exclusively with the H32, H32P and MDP3 Zone Panels to sense outdoor air temperature when controlling dual/fossil fuel heat pumps.



Model OAS LIST PRICE \$41.00



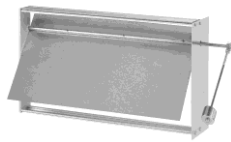
Model ZPS LIST PRICE \$43.00

By-Pass Dampers and Controls

MODEL SPRD - Static Pressure Regulating Damper

The Static Pressure Regulating Damper, Model SPRD, is a single blade, counter balanced weighted damper, that operates on air pressure in order to control the flow of by-pass air on a zoned system. SPRD dampers are available in both rectangular/square and round sizes. The SPRD has an adjustable arm and weight to maintain the correct amount of pressure in the duct system. The SPRDs can be mounted in both horizontal and the vertical position for either up flow or down flow systems. The SPRD can also be used as a back draft damper to relieve excess air pressure in any duct system.

NEW RTB - Round Take-Off By-Pass is a combination take-off collar and adhesive seal and by-pass damper in one unit. All RTB dampers are 8" in length.



Rectangular/Square	List Price
SPRD1208 12"x8"	\$ 114.00
SPRD1210 12"x10"	\$ 123.00
SPRD1212 12"x12"	\$ 125.00
SPRD2008 20"x8"	\$ 127.00
SPRD2010 20"x10"	\$ 130.00
SPRD2012 20"x12"	\$ 134.00



Round Sizes	List Price
SPRD 08	\$ 117.00
SPRD 09	\$ 120.00
SPRD 10	\$ 123.00
SPRD 12	\$ 125.00
SPRD 14	\$ 128.00
SPRD 16	\$ 142.00
SPRD 18	\$ 157.00
SPRD 20	\$ 176.00



NEW Round Take-Off By-Pass

Model	List Price
RTB08	\$110.00
RTB10	\$120.00
RTB12	\$134.00
RTB14	\$144.00

Motorized By-Pass Controls for use with ZDSM/ZDBM and RDM Dampers on Page 1

Model SPS

Static Pressure Switch



The Static Pressure Switch is a economical control for a modulating damper to control by-pass air. Preset at 0.2"WC and 0.3"WC, the SPS truly modulates the RDM/ZDM dampers to maintain the system static below 0.3"WC. Above 0.3"WC the SPS will Open the by-pass damper and below 0.2"WC will close the damper.

LIST PRICE \$127.00

Model SPC

Static Pressure Control



The Static Pressure Control is a higher pressure control for a modulating damper to control by-pass air. The SPC is adjustable between 0.08" W.C. to 1.2" W.C. The SPC modulates the RDM/ZDM dampers to maintain the system static.

LIST PRICE \$369.00

ZONE THERMOSTATS

Model TDS - Single Stage Digital Thermostat



The TDS is a digital, single stage, 24V powered thermostat. This heating-cooling thermostat has only a single set point and is manual changeover with no setback. The TDS has terminal connections Y-O/B-G-R-C-W. The TDS can also control a single damper.

LIST PRICE \$124.00

Model TTS and TTH

Touchscreen Thermostat



The TTS is for single stage systems and TTH for Heat Pumps. Both have a large LCD touchscreen for easy viewing and simple programming. The thermostat can be set-up to be 7 day programmable thermostat or not. Features such as keypad lockout and limited range control. This attractive thermostat can be hard wired or battery powered and configured for manual as well as automatic changeover. Both models can be used with older TAT Zoning Panels.

Model TTS \$336.00
Model TTH \$378.00

Model TWF

Wi-Fi Smart Thermostat



Smartphone NOT Included

The TWF is a Wi-Fi enabled thermostat allowing remote access control via your smartphone, tablet or computer. The LCD screen provides large easy to read numbers. It is easily set-up thru the app and can remotely control multiple thermostats easily with the same app. The TWF is compatible with any of the ZONEFIRST Control Panels and can be configured for conventional or heat pump operation. The TWF has terminals RC-RH-O/B-Y-G-W/E-C-L-Y2-W2.

LIST PRICE \$328.00

Model TPS - Programmable Thermostat



The TPS is a battery powered, 5-1-1 or 5-2 Day, setback thermostat. The TPS is used on any zone of the new and older relay based zone control panels. The terminal connections on this thermostat are Y-O/B-G-R-W.

LIST PRICE \$148.00

Model WTR

Wireless Thermostat and Receiver



The Wireless Thermostat and Receiver now make zoning easier to install in existing homes and buildings. The WTR package includes a wireless thermostat that can be mounted or placed virtually anywhere, eliminating the need to run wires to the thermostat. This saves hours of labor on any installation. A remote receiver is located next to or near the zone control panel and is wired to the corresponding zone on the panel. The WR, Wireless Receiver, wires to the zone thermostat terminals on the panel. Best of all the thermostat is a digital programmable thermostat providing 4 settings per day and automatic changeover.

WTR Package	List Price	WT - Thermostat Only	WR - Receiver Only
	\$364.00	\$182.00	\$182.00

REPLACEMENT MOTORS and ACCESSORIES

Model MSS

24 Volt Silent Spring Return Damper Motor



The MSS is the replacement spring return motor used for the RDS and ZD dampers. The 24 Volt motor powers the damper typically to Closed and Spring Returns it back to open for fail safe operation. The dampers can be reversed in the field using this same motor. The MSS replaces the MSR, RDM, RDMH Motors.

LIST PRICE \$153.00

Model MP12M Plug-In DC Damper Motor



The MP12M is the replacement motor for all Plug-In Dampers. This motor is specifically designed for use only with the dampers in this price sheet and is for replacement only. This motor has a built-in two color LED to indicate the motors position, Green for Open, Red for Closed. The MP12M wires using a modular cord supplied with each damper. The MP12M replaces all MP12 and the M version now has adjustable minimum position.

LIST PRICE \$153.00

Model MDM

Modulating Damper Motor



The MDM is a three (3) wire power open-power closed damper motor with built-in LEDs to indicate the damper's position. This motor is used on the ZDM and RDM dampers and is used with the SPS and SPC static pressure controls for by-pass. This motor is also used on the RRM damper.

LIST PRICE \$153.00

Model RCD Round Damper Counter Display



This Countertop Display is an RDS07 complete with a digital thermostat and transformer. The damper is power open and spring closed and opens whenever the thermostat calls for heating, cooling or the fan switch is ON. When the thermostat satisfies and the Fan switch is in Auto the damper will close. This display is 12"Wx14"H and 12"D.

LIST PRICE \$390.00

Model AFC

Anti-Freeze-Up Control



The AFC prevents the air conditioning coil from freezing due to low air flow, dirty filters, low refrigerant pressure, etc. The AFC snaps onto the suction line as close to the evaporator coil as possible and breaks the compressor circuit when the suction line drops below 38° F and re-makes the circuit at 48°F. Recommended when by-passing air into the return duct.

LIST PRICE \$ 35.00

Model T24

24 Volt Transformer



The T24 is a 24 Volt AC, 50/60Hz, 40 VA Transformer used to provide low voltage power for any 24VAC damper and/or control panel. This UL rated transformer mounts on a standard 4"x4" electrical box and is supplied by 110-120VAC.

LIST PRICE \$39.00

NEW OUTLET ZONE DAMPER

Model OZD

Outlet Zone Damper with Wiring Included



The NEW Outlet Zone Damper, Model OZD, is an aluminum opposed blade damper that inserts into the outlet or opening of the duct into a room. The damper with self-contained motor simply inserts into the outlet opening. The depth of the damper is 2.25" and the motor is towards the center of the damper and adds another 1" of depth that easily allows the OZD to fit into most angled floor boots. The OZD is then covered with any flat floor grille, those without dampers, or registers. The OZD is powered by ZONEFIRST's exclusive Plug-In Damper Motor. Each OZD includes 100' length of plenum rated cable, Model PRC1, for wiring run thru the duct. The PRC is also available in 200' lengths, Model PRC2, with modular connectors (RJ11) already for installation. Both prices listed below.



OZD inserted in Duct Boot

LIST PRICE	OZD1004	\$227.00	OZD1204	\$230.00	OZD1404	\$236.00
	OZD1006	\$232.00	OZD1206	\$235.00	OZD1406	\$240.00
	PRC1	\$91.00	Included with damper		PRC2	\$184.00

TAT Replacement Dampers and Parts

MODEL AOBD - Automatic Opposed Blade Damper

The AOBD series of motorized dampers are constructed of lightweight anodized aluminum with a 24 volt power open-power closed damper motor. These dampers are available as a side mount, Model AOBD; a bottom mount, Model AOBM; and an internal mount Model IOBD. These lightweight and thin profile dampers are perfect for inserting into any duct and providing maximum air flow control. The power open-power closed damper has built-in end switches to control additional dampers or other auxiliary components. The AOBD series of dampers are for systems up to a maximum of 0.5"W.C.



AOBD



AOBM



IOBD

		4"	6"	8"	HEIGHT		
					10"	12"	14"
	6"	235.00	237.00				
	8"	239.00	241.00	246.00			
	10"	242.00	245.00	251.00	255.00		
	12"	245.00	247.00	255.00	261.00	270.00	
W	14"	255.00	257.00	261.00	270.00	278.00	287.00
I	16"	265.00	267.00	271.00	275.00	287.00	296.00
D	18"	270.00	272.00	275.00	282.00	296.00	311.00
T	20"	275.00	278.00	282.00	291.00	309.00	322.00
H	22"	281.00	285.00	290.00	297.00	320.00	334.00
	24"	290.00	294.00	297.00	314.00	334.00	350.00
	26"	296.00	304.00	314.00	329.00	350.00	364.00
	28"	314.00	321.00	328.00	346.00	364.00	373.00
	30"	328.00	335.00	342.00	358.00	373.00	400.00

AOBD and IOBD available in all sizes. AOBM sizes only available in bold. All AOBD, AOBM and IOBD Dampers are special order and are not returnable.

Model MST

Motor Switch Terminal for AOBD Dampers



The MST motor is used on all two-position AOBD style dampers as well as older model TAT registers and diffusers. It can also be used as a replacement motor for the EWC Controls Model MAN motor. The motor is 24 Volts, 6 Watts with end switches and has a 30 second opening and closing.

LIST PRICE \$204.00

Model 4PDR

4 Pole Double Throw Relay



The 4PDR is a 24 Volt 4 Pole Double Throw Relay used for various control functions to control dampers. Most commonly this is used when multiple AOBD series dampers are required to be slaved together to operate from a single zone. It also is used when more than 4 or 5 spring return dampers are slaved together and isolates power transformers from requiring phasing. The 4PDR socket has screw terminals and can be mounted on a DIN rail and uses the PIRR Relay.

LIST PRICE \$58.00

Model PIRR

Plug-In Replacement Relay



The PIRR is the replacement relay for many older TAT Mark IV, V, VII, VIII, X, XXXI, II and MM-2/3 Zone Control and Accessory Relay panels. The 24 Volt, 4PDT relay is easily replaceable by simply unplugging the old relay and replacing by plugging in the new one. This relay is the same as the RMABS relay.

LIST PRICE \$43.00

NEW freshex® Air Cyclor

Model FAC



LIST PRICE \$270.00

The Air Cyclor controls fresh air intake and ventilation and is a low cost alternative to the more expensive ERV/HRV. By periodically operating the HVAC System fan the Air Cyclor vastly improves the temperature, humidity and filtration system in the home or office. It provides more circulation throughout the building and eliminates stagnant air and odors by inducing fresh outdoor air. The Air Cyclor is a "smart" device as it knows when the central fan operates and activates the fan only after a selected period of time during which the fan has not operated.

The Air Cyclor has a 24VAC output circuit that controls a motorized damper, Model RDSC, ducted to the outdoors, to effectively regulate fresh air ventilation when the Air Cyclor is on. The damper is cycled whenever the Air Cyclor turns the fan on.

The RDSC is a 24VAC normally closed damper that powers open on a call from the FAC. Any of ZONEFIRST's spring return dampers can be made for power open operation and used with the FAC.

**Meets all
Ventilation
Codes**

Model RDSC



RDSC04	\$196.00
RDSC05	\$198.00
RDSC06	\$202.00
RDSC07	\$205.00
RDSC08	\$212.00

Members and Supporters of the following Industry Associations:



FIVE (5) YEAR LIMITED WARRANTY

ZONEFIRST warrants its products to be free of defects and to provide trouble free operation for a period of Five (5) years from the date of installation. The warranty is limited to the cost of the product and does not include claims for labor or consequential damage. Prior authorization must be obtained from ZONEFIRST before returning any product. Products returned under warranty and found to be defective will be replaced or credited. Items returned within the warranty period that are found not to be defective and those items that are out of warranty are subject to a minimum repair or inspection fee. All returns must be sent freight prepaid with the return authorization number clearly marked on the packing slip. Returns without prior authorization will be refused. All items damaged in freight cannot be returned and a claim with the freight carrier must be made.

RETURNS: All returns must have prior authorization and are subject to a 20% re-stocking charges. Special order items may not be returned for credit. Returns are for credit only and can only be used towards future purchases.



ZONEFIRST
Controlling Your Comfort Room By Room
www.zonefirst.com

20 Bushes Lane • Elmwood Park, New Jersey 07407-3204 USA
Toll Free (US and Canada) 1-877-FIRSTZONE (347-7896)
Telephone 1-201-794-8004 • FAX 1-201-794-1359
E-Mail: info@zonefirst.com Orders: orders@zonefirst.com



Form 111-1501