



Living Life In

Comfort

High Efficiency Evaporative Air Cooling >>

Industry leading advancements and reliability, the AeroCool Trophy Series high efficiency air coolers provide worry free operation and low maintenance, allowing you to - *Live Your Life In Comfort.*



AEROCOOL®
Trophy
SERIES™
Evaporative Air Cooler

Reliable and Efficient Evaporative Air Cooling For Your Home



Versatility

Reliability & Comfort

Your Family Deserves it.

Choosing the Right Model To Meet Your Needs

Choosing the right Aerocool Trophy Series model is important for proper operation. The Trophy Series air coolers are designed to operate at maximum efficiency with minimal maintenance. All Trophy air coolers use High-Efficiency Rigid Media to deliver colder air while reducing the time spent replacing standard aspen media.

For maximum performance, choose the model with the proper rating and motor as well as the correct duct configuration. Ask your qualified contractor to help you choose the correct Aerocool Trophy Series model that best fits your home and your needs.



Side Draft



Down Draft



Up Draft

Specifications

Model Number	Indus. STD Rating	Air Delivery CFM (Cubic Feet Per Minute)						Electrical Specifications			
		0.0"	0.1"	0.2"	0.3"	0.4"	0.5"	HP	Speed	Volts	Amps
TD/TH 4800	4400	3329	3035	2816	2623	2429	2235	1/2	2	115/230	8.5/4.5
TD/TH 4812	4400	2860	2790	2645	2350	2030	1890	1/2	2	115/230	9.5/5.2
TD/TH 4800	4800	3875	3619	3440	3286	3132	2978	3/4	2	115/230	11.5/5.4
TD/TH 4812	4800	3270	3220	3190	2940	2650	2350	3/4	2	115/230	11.9/6.7
TD/TH/TUP 6800	5800	4250	4125	4000	3850	3650	3425	3/4	2	115/230	11.5/5.4
TD/TH 6812	5800	4130	4000	3820	3630	3375	2740	3/4	2	115/230	11.9/6.7
TD/TH/TUP 6800	6800	4750	4600	4475	4375	4250	4050	1	2	115/230	12.5/6.7
TD/TH/TUP 6812	6800	4551	4440	4300	4080	3940	3680	1	2	115/230	13.5/7.4



● Longevity and Low Maintenance

Utilizing single inlet design, the Trophy Series provides the ultimate protection available for the longevity of your cooler. Fully lined in a tough plastic shield, the all-metal construction of the wet module is protected from the damaging effects of typical deposits found in most water systems. High efficiency evaporative

cooling, low maintenance and long life of the Trophy Series makes this cooler your award winner.

Responding to your specific requirements, these units are available in three models: down, side and the up discharge for concealed ground level applications.



1 High-Efficiency Rigid Media

The Aerocool® evaporative cooler beats the others cold. It's attractive, easy to install, more efficient and less costly to operate. In fact it is up to 13% more efficient than conventional coolers. The media material provides cooler air and can last up to 10 times longer than aspen pads.



2 Pro-Armor

The premier single inlet cooler with polymeric inner structure that completely shields the wet section from corrosive interaction.



3 Low Sump Pump

The most powerful pump on the market today. US Patent #5,527,157

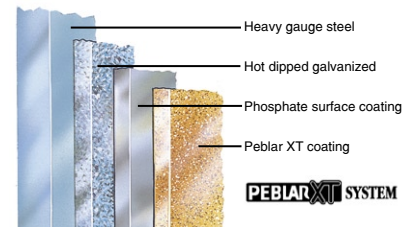
4 Easy Access Gravity-Held Doors

Easy to remove access doors reduce maintenance time.



5 Peblar XT Protective Powder Coat

Our exclusive Peblar XT surface preparation is the highest quality architectural grade finish used in the industry to date. This attractive multi-layer bonded treatment protects your cooler against corrosion and assures years of reliable service.



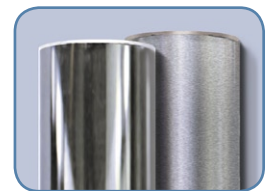
6 Flomate

Flomate-quality water distribution system improves wet-out. US Patent #5,130,063



7 PMI Exclusive MIRROSCOPIC™ Blower Shaft Finishing Process

This yields a 90% improvement over the industry standard "ground finish". This means quieter operation and longer bearing and shaft life for your cooler!



8 Pro-Shield (Optional Accessory)

This weatherizing panel prohibits wind and cold from entering into your home during the off-season. Easy to install, media protection is also afforded thereby increasing the life of the unit.

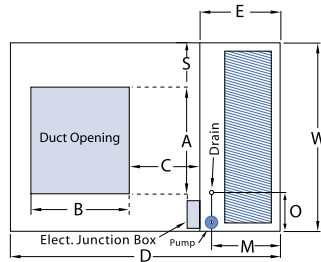


High Efficiency Evaporative Air Cooler

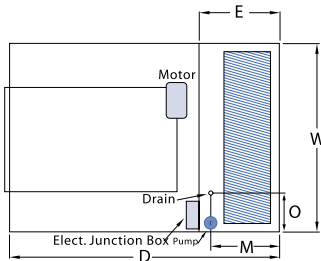
The Aerocool® Trophy™ Series cools better and requires less maintenance than conventional coolers.

All Trophy™ Series Evaporative Coolers Feature:

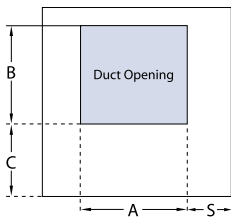
- High Efficiency long life rigid type pad material has superior performance qualities
- PEBLAR XT™ is an outdoor architectural type powder coat finish
- PLASTIC lined wet section
- FLO-MATE water distribution system
- MIRROSCOPIC™ polished blower shaft finish



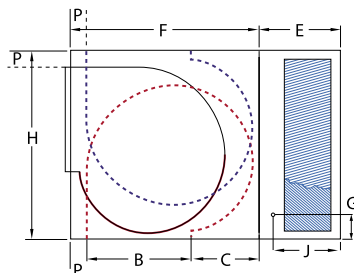
Top View (updraft)



Top View



End View



Side View

AEROCOOL® Evaporative Coolers and components are designed and tested in accordance with one or more of the following standards or agencies. **AIR DELIVERY** - data published derived from tests conducted in accordance with A.M.C.A. (Air Movement and Control Assoc.) standard 210. **EVAPORATIVE MEDIA** - Specially Corrugated Cellulose Materials, impregnated with insoluble antirot salts and regidifying saturants. **SEALANT** - water immersion per ASTM D870. **FLEXIBILITY** - per ASTM D756. **CORROSION RESISTANCE** - per ASTM B117. **PENCIL HARDNESS** - per ASTM D3363. **IMPACT RESISTANCE** - per D2794. **FLEXIBILITY** - per ASTM D522. **SURFACE BURNING CHARACTERISTICS** of building materials (best rating) per UL 723 and ASTM E-84. **PUMPS** recognized under UL standard #778 for operating water pumps with thermal overload and locked rotor protection. **POLYMERIC MATERIALS** listed in accordance with UL 94 and 746C. **MOTORS** recognized under UL component standard #1004 for motor certification. **MOTORS** tested under UL standard #547 for locked rotor and heat rise protection.

Recommendations

	MODEL	MODEL	MODEL
QTY			
CFM			
STAT PRES			
MTR			
HP			
SPEED			
VOLTAGE			
Optional Accessories			
Notes:			
Contractor		Submitted By:	

* Industry Standard Rating represents a numeric index for use in comparing units of different manufacturers

Phoenix Manufacturing, Inc. produces this equipment, with pride and craftsmanship, in the **U.S.A.** As a leader in our country's evaporative cooler production, we continuously strive to offer product improvements and reserve the right to change specifications and designs without notice.

Trophy Series Engineering Data

Model Number	Cabinet			Duct Opening			C	E	F	Water Inlet		Drain		P	S	Oper. Weight	Ship Weight
	H	W	D	A	B	G				J	M	O					
TD/TH 4800	27 5/16	42	43	17 3/4	17 3/4	8 1/16	17	26	5 1/2	13 1/2	13 1/4	13	1 1/2	12 1/8	161	189	
TD/TH 4812	27 5/16	42	47	17 3/4	17 3/4	8 1/16	21	26	5 1/2	17 1/2	17 1/4	13	1 1/2	12 1/8	177	212	
TH 6800	34 5/16	42	45	19 3/4	19 3/4	11 1/4	17	28	5 1/2	13 1/2	13 1/4	13	3 1/4	11 1/8	198	220	
TD 6800	34 5/16	42	45	19 3/4	19 3/4	13 1/16	17	28	5 1/2	13 1/2	13 1/4	13	1 1/2	11 1/8	198	220	
TUP 6800	34 5/16	42	45	19 3/4	19 3/4	13 1/16	17	28	5 1/2	13 1/2	13 1/4	13	1 1/2	11 1/8	198	220	
TH 6812	34 5/16	42	49	19 3/4	19 3/4	11 1/4	21	28	5 1/2	17 1/2	17 1/4	13	3 1/4	11 1/8	214	257	
TD 6812	34 5/16	42	49	19 3/4	19 3/4	13 1/16	21	28	5 1/2	17 1/2	17 1/4	13	1 1/2	11 1/8	214	257	
TUP 6812	34 5/16	42	49	19 3/4	19 3/4	6 3/4	21	28	5 1/2	13 1/2	13 1/4	13	1 1/2	11 1/8	214	257	



PHOENIX MANUFACTURING, INC.
"Committed to Customer Success"™

Phoenix Manufacturing Inc.
3655 East Roeser Road
Phoenix, Arizona 85040
Phone: 602-437-1034
Fax: 602-437-4833
www.evapcool.com