



COMMERCIAL FABRICATION DIVISION

www.herculesindustries.com

5050 Florence St. Denver Colorado 80238

Tel. 303 388-899 Fax. 303 388-8301

Toll Free. 1 800 870-4305

HERCULES SPIN-IN FITTINGS

FOR METAL DUCT

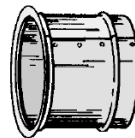
I. SPECIFICATIONS

- Constructed of 26Ga. Galvanized steel.
- 2 quadrants on all dampers.
- Body with bead allows for easy duct connection.
- Ideal for Regular or Splitter Dampers.
- Regulator body is formed of heavy gauge cold rolled steel—rust-resistant galvanized finish.
- Fully retractable bearing of zinc alloy die-casting, threaded to accept 5/16 - 18 wing nut.
- Position of handle indicates damper setting.
- "Rapid" will penetrate and secure to round or rectangular damper blades up to 20 gauge.
- Raw end allows for connection to any type duct.
- Bellmouth shape allows for greater air flow.

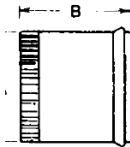
II. MATERIAL

- Galvanized steel (26 Ga. ASTM-A653-00)

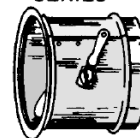
5000 SERIES



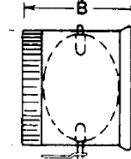
PLAIN NO DAMPER



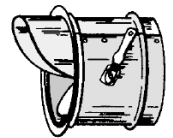
6000 SERIES



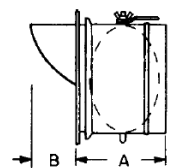
WITH DAMPER



8000 SERIES



WITH SCOOP & DAMPER



Order size	#5000 DIM. B	#6000 DIM. B	#8000 SERIES DIM. A B	
4"	6"	4"	4"	3"
5"	6"	5"	4"	3"
6"	6"	6"	6"	4"
7"	6"	7"	7"	5"
8"	6"	8"	8"	5"
9"	6"	10"	9"	5"
10"	6"	12"	10"	6"
12"	6"	12"	12"	7"
14"	6"	12"	12"	8"
16"	6"	12"	12"	9"
18"	6"	12"	12"	10"
20"	6"	12"	12"	11"

* All gauges and reinforcements are in compliance with 2005 SMACNA standards for duct fabrication





COMMERCIAL FABRICATION DIVISION

www.herculesindustries.com

5050 Florence St. Denver Colorado 80238

Tel. 303 388-899 Fax. 303 388-8301

Toll Free. 1 800 870-4305

HERCULES SPIN-IN FITTINGS

BELLMOUTH FOR METAL DUCT

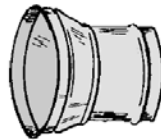
I. SPECIFICATIONS

- Constructed of 26Ga. Galvanized steel.
- 2 quadrants on all dampers.
- Body with bead allows for easy duct connection.
- Ideal for Regular or Splitter Dampers.
- Regulator body is formed of heavy gauge cold rolled steel—rust-resistant galvanized finish.
- Fully retractable bearing of zinc alloy die-casting, threaded to accept 5/16 - 18 wing nut.
- Position of handle indicates damper setting.
- "Rapid" will penetrate and secure to round or rectangular damper blades up to 20 gauge.
- Raw end allows for connection to any type duct.
- Bellmouth shape allows for greater air flow.

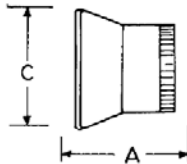
II. MATERIAL

- Galvanized steel (26 Ga. ASTM-A653-00)

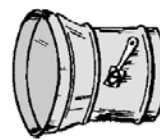
8500 SERIES



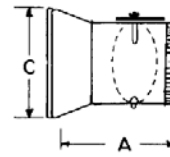
BELLMOUTH PLAIN



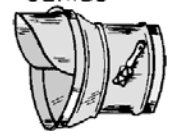
#9000 SERIES



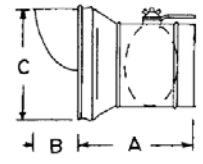
BELLMOUTH WITH DAMPER



#9100 SERIES



WITH SCOOP & DAMPER



Order size	#8500 SERIES DIM.		#9000 SERIES DIM.		#9100 SERIES DIM.		
	A	C	A	C	A	B	C
4"	6"	6"	9"	6"	9"	3"	6"
5"	6"	7"	10"	7"	10"	4"	7"
6"	6"	8"	10"	8"	11"	4"	8"
7"	6"	9"	11"	9"	12"	4"	9"
8"	6"	10"	12"	10"	13"	5"	10"
9"	6"	12"	13"	12"	14"	5"	12"
10"	6"	12"	14"	12"	15"	6"	12"
12"	6"	14"	16"	14"	17"	7"	14"
14"	6"	16"	16"	16"	17"	8"	16"
16"	6"	18"	16"	18"	17"	9"	18"
18"	6"	20"	16"	20"	17"	10"	20"
20"	6"	22"	17"	22"	17"	11"	22"

* All gauges and reinforcements are in compliance with 2005 SMACNA standards for duct fabrication

