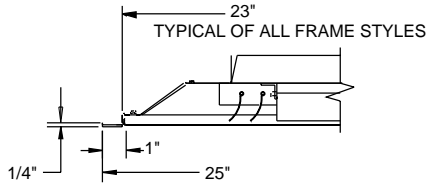
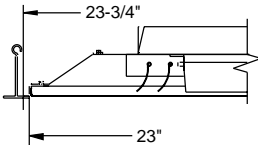


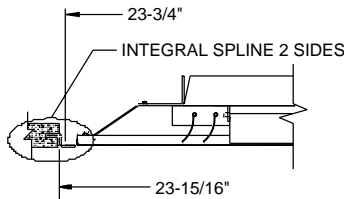
- Neck mounted curved blade core (Blades adjustable from face)
- Available in 1, 2, 3, or 4-way air pattern (Factory set)
- Hinged / removable face allows for easy access to damper
- Optional square damper is shipped loose and field mounted
- Model **PV** is all steel construction
- Model **APV** is steel backpan with aluminum face
- Standard finish is white



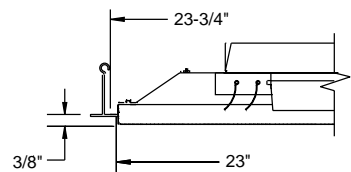
Frame SF (Surface Mount)
*minimum ceiling opening 23-1/4"



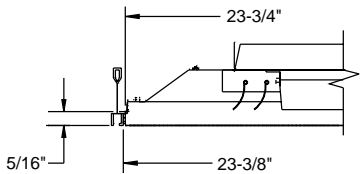
Frame LT (Lay-in T-Bar)



Frame PL (Spline)



Frame TG (Tegular)



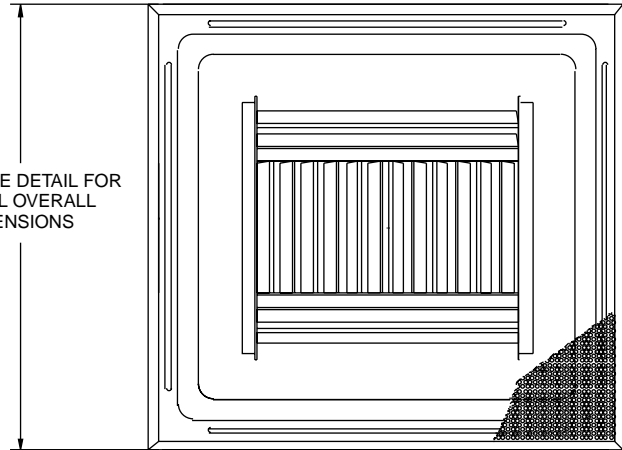
Frame NR (Narrow Regress)

Frame Detail:
24 x 24 Module Size

Air Pattern Options
(specify when ordering)

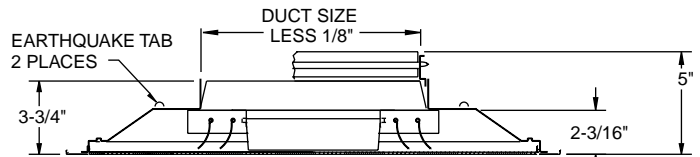


SEE FRAME DETAIL FOR
TYPICAL OVERALL
DIMENSIONS

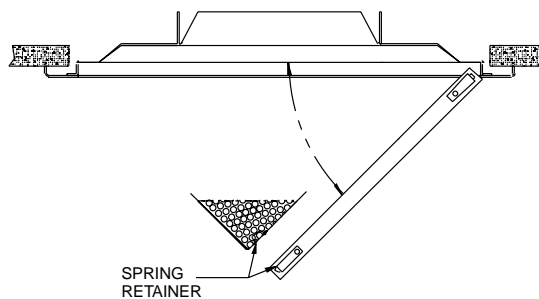


PV

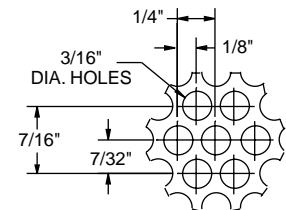
APV



Side View/Damper Detail, SF Frame



Face Hinge Detail



Perforated Pattern Detail
(51% free area)

Dimensions are in inches. Product information subject to change without notice.

PROJECT: _____
 ARCHITECT: _____
 ENGINEER: _____
 CONTRACTOR: _____
 LOCATION: _____

SUBMITTED BY: _____

DATE: 7/2/01

SD - 1771

PV, APV Square Neck
 Perforated Supply
 with Curved Blade Core
 24 x 24 Module Only