

Metal Duct Tools & Accessories



TurboXTools™



Drill Attachment for Fast Power Crimping!

Now make Fast, Easy & Precise Power Assisted Crimps in large or small diameter duct and pipe.



Drill Requirements:
1/4 in. (6.35 mm) Chuck,
Min. 14.4V - DC, Max 7A-AC

C5A
U.S. Patent No. 7,093,365

*Cordless Drill
Not Included.*

Use your existing drill to save time and effort crimping 24 to 30 ga. (0.71 to 0.41 mm) galvanized steel duct, spiral duct, aluminum pipe or (0.61 to 0.31 mm) black stove pipe!

The drive shaft of the CR Crimping Attachment inserts into the chuck of a minimum 14.4 Volt cordless or maximum 7 Amp A/C drill. A compact, telescoping clamp adjusts to fit both length and width of any size drill housing. The installed Crimper TurboXTool is easily operated with one hand. Set the drill at low forward drilling speed. A 9:1 gear reduction ensures safety and control.



The rotation of the meshing teeth on the adjacent gears drives the metal out the right side of the tool head. Use the throat depth line as a guide to control the length of the crimp.



Use the crimper depth adjustment lever, in the down position, to open gears for easy insertion and removal of metal. The narrow point of entry in the face of the tool prevents fingers from entering the gears that produce the crimp.



Start the crimp to the left of the duct or pipe lock-seam. With the lever in the up position, the maximum crimping depth is factory set for optimal results in 26 to 28 gauge (0.56 to 0.48 mm) galvanized steel. Back off the lever for lighter metals or re-adjust the maximum crimp, per operators manual, for heavier metals. A clutch in the gear mechanism prevents damage to the crimper attachment if seams are encountered that exceed crimper capacity.

Specifications

Catalog Number	Description	Drill Set-up	Crimping Capacity ga. (mm)	Net Wt. oz. (g)	Net Wt. lbs. (kg)
C5A	TurboXTools, Crimper Drill Attachment	Low Forward Drilling Speed	24 to 30 (0.71 to 0.41)	—	4.9 (2.22)
Replacement Parts					
TSDC	TurboShear Drill Clamp			8 (227)	—
TSCG	TurboShear Heavy-Duty Chuck Guard			—	.06 (0.03)

5-Blade Crimper



C5R



Longer, shallower crimps produced with the C5R result in a tighter fitting, more self supporting, leak-proof connection in sheet metal pipe & duct.

Easy Hand Motion and Greater Control:

A superior compound leverage mechanism offers maximum ease of operation. Comfortable opening, spring-actuated handles, give additional comfort and control. Ergonomic Redline Handles with unique one-hand operation latch offer maximum compound leverage performance and natural fit and feel.

Longer Lasting Performance

Wear resistant, hardened steel construction throughout! Hardened steel also produces greater handle strength to resist abuse and collapsing. Nickel plating resists elements.

Offset Crimper



C6R

Ideal offset crimper for tight-working quarters or working over-head.

A unique blade design keeps handles offset and keeps hands off work obstacles such as floor joists and underlayments. The handle design also promotes correct gripping of tool resulting in less wrist fatigue. Long wearing steel components are nickel plated to resist elements. Ergonomic Redline Handles with unique one-hand operation latch offer maximum compound leverage performance and natural fit and feel.

3-Blade Crimper



SC3R

Ideal for crimping heavy 24 to 22 gauge (0.71 to 0.86 mm) galvanized sheet steel.

Long wearing steel components are nickel plated to resist elements. Ergonomic Redline Handles with unique one-hand operation latch offer maximum compound leverage performance and natural fit and feel.

Single Crimper



SC1

Fast, easy to use and lightweight. Handy lock makes tool pocket sized.

Rust-resistant, zinc plated steel construction with vinyl cushioned grips.

Specifications

Catalog Number	Description	Throat Depth in. (mm)		Variable Leverage Ratio (High / Low) throughout stroke		Jaws	Length in. (mm)	Net Wt. oz. (g)
C5R	5-Blade Crimper	1-5/8 (41.3)		6.6 to 1.0 - 8.7 to 1.0		Carbon Steel	9-5/8 (244)	17 (482)
C6R	Offset Pipe Crimper	1-5/8 (41.3)		—		Carbon Steel	—	16 (454)
SC3R	3-Blade Crimper	1-1/4 (31.8)		6.6 to 1.0 - 8.7 to 1.0		Carbon Steel	9 (229)	14 (397)
SC1	1-Blade Crimper	1-1/4 (31.8)		—		Carbon Steel	8 (203)	8 (227)
CAPACITIES	Material	Aluminum	Copper	Stainless Steel 26 Gauge	Galvanized Steel 24 Gauge	Mild Steel 24 Gauge		
C5R	inches (mm)	0.035 (0.89)	0.023 (0.58)	0.018 (0.46)	0.028 (0.71)	0.024 (0.61)		
C6R	inches (mm)	0.035 (0.89)	0.023 (0.58)	0.018 (0.46)	0.028 (0.71)	0.024 (0.61)		
SC3R	inches (mm)	—	—	0.024 (0.61)	0.034 (0.86)	0.030 (0.76)		

Replacement Spring for Hand Tools

5018 Fits C5R, C6R and SC3R

Hand Notcher



Fast and easy cutting. Notcher makes a clean 30° “V” shaped cut in sheet metal.

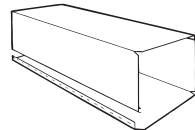
13/16” (20.6 mm) maximum throat depth. Upper cutting jaw is drop forged high impact alloy steel. Hook design of cutting jaw facilitates notching corners or take-off tabs to desired depth without slipping. Long-wearing, hardened stamped steel components feature rust resistant nickel plate and black oxide finishes. Ergonomic Redline Handles with unique one-hand operation latch offer maximum compound leverage performance and natural fit and feel.

One-Inch Notcher

Provides more clearance for folding and fabricating metal ductwork



Snap Lock Punch



The N2R Notcher punches a big 1 inch (25.4 mm) deep “V” notch in common 24 to 30 (0.71-0.41 mm) gauge galvanized sheet metal quickly and easily.

Folding and fabricating metal ductwork is easier than ever with the full 1 inch clearance that the N2R single operation notcher provides. Precision-ground steel upper jaw and hardened stamped steel components feature rust-resistant black oxide and nickel plated finishes. Ergonomic Redline Handles with unique one-hand operation latch offer maximum compound leverage performance and natural fit and feel.

Join sheet metal, duct and pipe sections economically.

No need for extra hardware. Punches raise a louvered shaped projection on metal edge for locking into rolled edge of sheet or piece to be joined. Metal pieces snap together and are fastened securely. Compound Handle Leverage for maximum ease of operation. Punch impression spaced 3/8” from edge of metal. Heavy forged cutting jaw. Rust resistant nickel plate and black oxide finishes. Ergonomic Redline Handles with unique one-hand operation latch offer maximum compound leverage performance and natural fit and feel.

Specifications

Catalog Number	Description	Throat Depth in. (mm)	Variable Leverage Ratio (High / Low) throughout stroke	Jaws	Cutting Angle	Length in. (mm)	Net Wt. oz. (g)
N1R	Hand Notcher	13/16 (20.6)	7.4 to 1.0 - 8.0 to 1.0	Alloy Steel Forging / Carbon Steel Shell	30°	8 (203)	16 (454)
N2R	One-Inch Hand Notcher	1 (25.4)	6.6 to 1.0 - 7.0 to 1.0	Investment Casting / Carbon Steel Shell	—	—	17 (482)
SL1R	Snap Lock Punch	3/8 (9.5)	10.8 to 1.0 - 11.7 to 1.0	Alloy Steel Forging / Carbon Steel Shell	—	8 (203)	16 (454)

CAPACITIES	Material	Aluminum	Copper	Stainless Steel 26 Gauge	Galvanized Steel 24 Gauge	Mild Steel 24 Gauge
N1R	inches (mm)	0.035 (0.89)	0.023 (0.58)	0.018 (0.46)	0.028 (0.71)	0.024 (0.61)
N2R	inches (mm)	0.035 (0.89)	0.023 (0.58)	0.018 (0.46)	0.028 (0.71)	0.024 (0.61)
SL1R	inches (mm)	0.035 (0.89)	0.023 (0.58)	0.018 (0.46)	0.028 (0.71)	0.024 (0.61)

Replacement Spring for Hand Tools

5018	Fits N1R, N2R, SL1R
------	---------------------

Dampers

Hardware / Components

Malco 28 Gauge Dampers feature 1/4" (6.4 mm) bearings allowing bearing holes to be made in round duct with the use of a scratch awl. Squeeze pipe so that it is oval shaped. Insert damper into pre-punched bearing hole(s). Pipe will spring back to round when released. Secure with wing nut(s) provided. Damper may be adjusted with screwdriver or optional damper handle. Available with or without handles. See below.



D8HT100



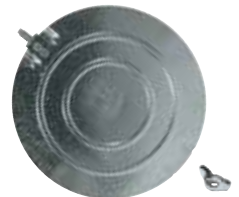
D7HT100



D6HT100



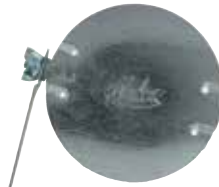
D5100



D6100



D6NA



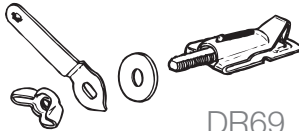
D4AST

Damper Regulator Hardware

- Fast installing hammer-on design.
- For use on 30-24 gauge (0.41-0.71 mm) galvanized steel.
- Standard 5/16" (8 mm) threads. / Packaged 12 sets per bag.
- **Note: Not for stove pipe:** Use only for air handling applications where temperature does not exceed 350°F (176°C).

Single Bearing / Spring Loaded:

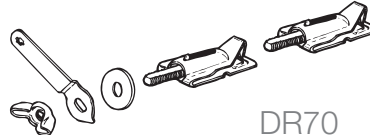
1-spring bearing / 1-inside washer / 1-handle / 1-wing nut



DR69

Double Bearing :

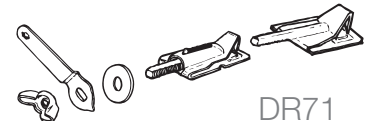
2-spring bearing / 1-inside washer / 1-handle / 1-wing nut



DR70

Double Bearing :

1-spring bearing / 1-fixed tip / 1-inside washer / 1-handle / 1-wing nut



DR71

Bulk Components



WN100
(100 pack) Wing Nuts



H1100
(100 pack) Damper Handles

Specifications

Catalog Number	Pipe Diameter in. (mm)	Bearing
Standard Dampers, including Wingnuts (Unassembled) 28 Gauge (0.48 mm) 100 packs		
D5100	5 (127)	single
D6100	6 (152)	single
D6HT100	6 (152)	double
D7HT100	7 (178)	double
D8HT100	8 (203)	double
Standard Dampers, including Wingnuts (Pre-assembled) 28 Gauge (0.48 mm) 100 packs		
D4AST	4 (102)	single
D5AST	5 (127)	single
D6AST	6 (152)	single
D7AST	7 (178)	single
D8AST	8 (203)	single
D6HTAST	6 (152)	double
D7HTAST	7 (178)	double
D8HTAST	8 (203)	double



CAUTION: Malco Dampers are designed for forced air systems, they are not capable of being used in wood, coal, or other similar systems.

Duct Stretchers

Straight / Offset / Locking

Use the Duct Stretcher to hold duct in place with one hand while slipping drive cleat in place with other hand. *The low profile, straight body is designed to go anywhere, even in the tightest quarters.* Additional spacing holes allow wheels to be adjusted to span greater distances. Rugged anodized aluminum body features large vinyl cushion grip and handy hang-up hole.



Straight and Offset Duct Stretchers



Model No. DS2 has the same unique features as model No. DS1 plus the angled bend of an offset handle to eliminate knuckle contact with metal.

Locking Duct Stretcher

Locks on from either side of duct connection



Model No. DS3 locking duct stretcher pulls duct sections together and holds them in place while freeing both hands to align and install drive cleats.

The DS3 locks on from either side of duct connection. No need to adjust wheels! Simply place wheel located on moveable cam to one side of adjoining duct flanges. Turn handle downward to pull duct sections together and lock in place. Greater wheel clearance makes capturing the ends of duct sections, even misshapen flanges, easier than ever. The versatile shape of the DS3 frame also lets you hook and pull duct from above as the drive cleat is coaxed along the remainder of flanged track. The durable all steel frame extends beyond wheel edges, making it safe to push, hammer and bend drive cleats as necessary to complete installation. An offset handle design eliminates knuckle contact with work.

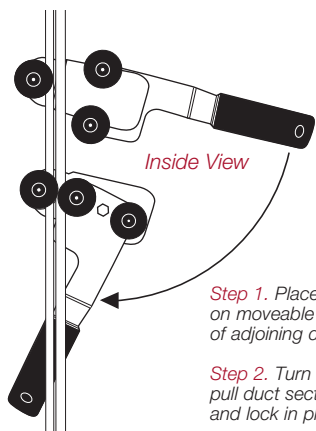
Specifications

Catalog Number	Description	Length in. (mm)	Net Wt. oz. (g)
DS1	Duct Stretcher	16 (406)	12 (340)
DS2	Offset Duct Stretcher	16 (406)	12 (340)
DS3	Locking Duct Stretcher	12 (305)	30 (851)
Replacement Parts for DS1, DS2 and DS3			
DS1C	Replacement wheels, nuts and screws (2 each)		

Duct Stretchers

Pipe and Duct Holders

(continued....)
 Locking
 Duct Stretcher



Step 1. Place wheel located on moveable cam to one side of adjoining duct flanges.

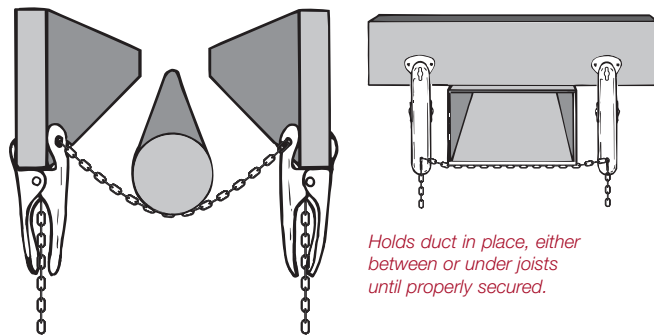
Step 2. Turn handle down to pull duct sections together and lock in place.



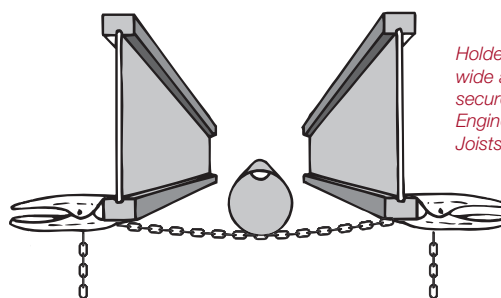
Like an extra pair of hands!

Holds Duct or Venting in place until properly secured.

- Double Ended Keyholes allow secure chain adjustment. Formed teeth hold clamp in place and secures chain in vertical or horizontal clamp position.
- **CAUTION: 20 lbs (9 kg) Maximum Work Load : For use on Residential Lumber and / or Engineered I-Beam Construction Only.**



Holds duct in place, either between or under joists until properly secured.



Holders also open wide and clamp securely for use on Engineered Wood Joists.

Specifications

Catalog Number	Description	Chain Length ft. (M)
2DH	1 pair of clamps and chain	4 (1.22)