

# MITCOR M-FLUSH ACCESS DOOR SUBMITTAL

5030 Corporate Exchange Blvd S. Grand Rapids, MI 49512  
 PH: 800-624-8642 FAX: 866-466-9335  
[www.commercialproductsgroup.com](http://www.commercialproductsgroup.com)

- 16 GA. C.R.S. ONE PIECE FRAME
- 16 GA. C.R.S. DOOR PANEL
- CONCEALED SPRING HINGE ALLOWING DOOR TO OPEN 175°
- EASY OPENING SCREWDRIVER CAM LATCH
- 22"x22" - 36"x36"
- AVAILABLE IN 1/2" INCREMENTS
- GRAY POWDER COATED STEEL
- AVAILABLE IN STAINLESS STEEL OR GALVANIZED STEEL
- OPTIONAL POWDER COAT COLORS INCLUDE BRILLIANT WHITE, GOLD SAND, AND JET BLACK
- ROUGH OPENING = WIDTH + 1/2" X HEIGHT + 1/2"

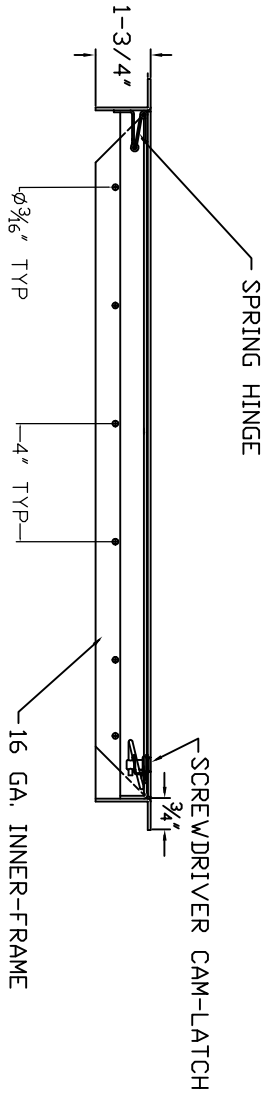
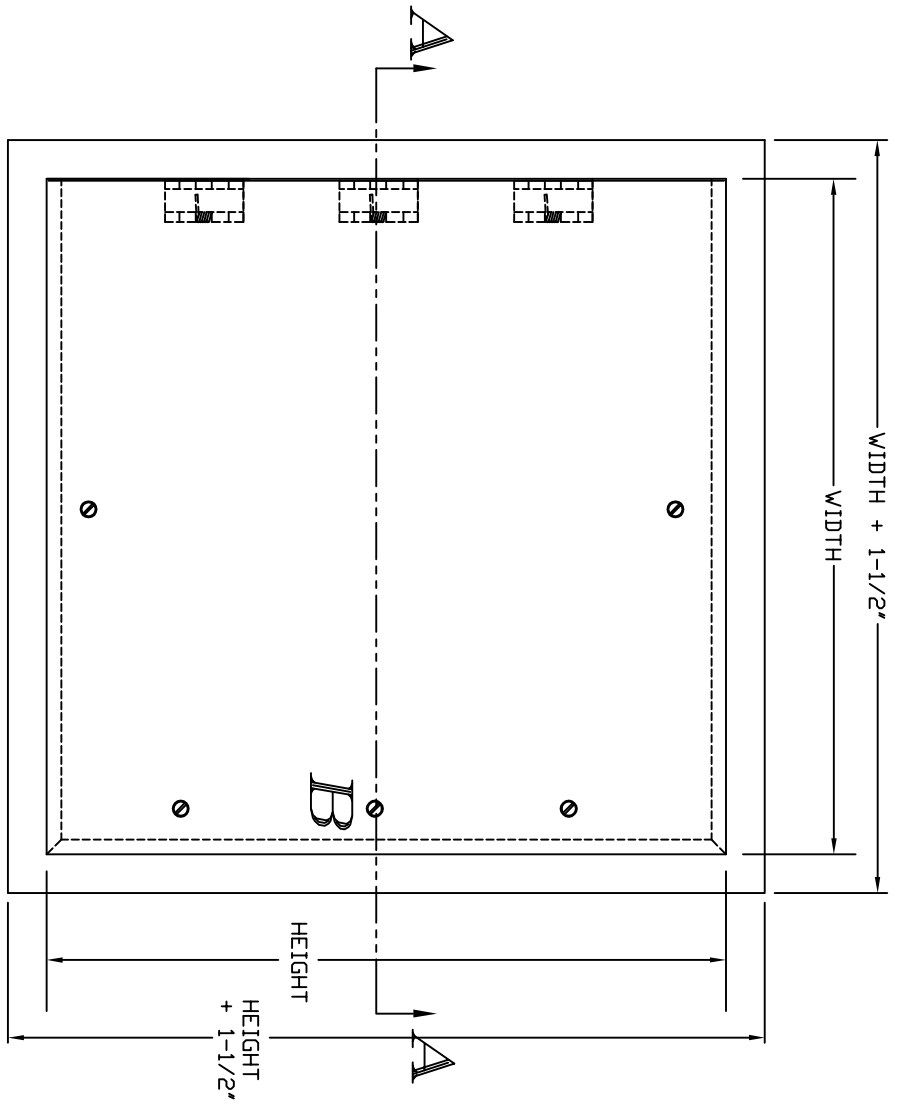
VERIFICATION AND APPROVAL OF GENERAL ARRANGEMENT AND OVERALL DIMENSIONS OF THIS DOCUMENT ARE REQUIRED BEFORE THE ORDER IS ENTERED FOR MANUFACTURING.

APPROVAL SIGNATURE \_\_\_\_\_

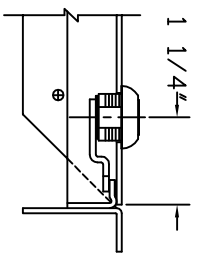
TITLE HELD \_\_\_\_\_

DATE OF APPROVAL \_\_\_\_\_

STANDARD SIZES & PART #'S				
QTY.	PRODUCT PART #'S	DOOR SIZE (W X H)	No. OF CAMS	No. OF HINGES
	3202-026	20 x 24	4	2
	3202-028	20 x 30	5	3
	3202-029	22 x 22	4	2
	3202-031	22 x 30	4	3
	3202-033	22 x 36	4	3
	3202-030	24 x 24	4	2
	3202-032	24 x 30	5	3
	3202-034	24 x 36	5	3
	3202-035	24 x 48	5	5
	3202-038	30 x 30	5	4
	3202-046	36 x 36	5	5



SECTION VIEW A-A



OPTIONAL CYLINDER LOCK

IF OPTIONAL CYLINDER LOCK IS REQUIRED IT WILL REPLACE CAM LATCH AT POSITION B