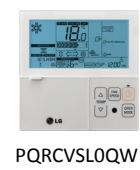


Date: _____ For: File Resubmit
 PO No.: _____ Approval Other _____
 Architect: _____ GC: _____
 Engr: _____ Mech: _____
 Rep: _____
(Company) (Project Manager)



PQRCVSL0QW

LC427HV
 Ceiling Cassette Single Zone
 Outdoor Unit (ODU) - LUU427HV Indoor Unit (IDU) - LCN427HV



Performance:

| | |
|--------------------------|--------|
| Cooling Capacity (Btu/h) | 42,000 |
| Heating Capacity (Btu/h) | 47,000 |
| SEER | 17 |
| EER | 10.31 |
| HSPF | 8.6 |

SEER - Seasonal Energy Efficiency Ratio EER - Energy Efficiency Ratio
 HSPF - Heating Seasonal Performance Factor

Electrical:

Outdoor Unit:

| | |
|-------------------------------------|--------------|
| Power Supply (V ¹ /Hz/Ø) | 208-230/60/1 |
| MOP (A) | 40 |
| MCA (A) | 24.1 |
| Cooling Rated Amps (A) | 22.0 |
| Heating Rated Amps (A) | 24.0 |
| Compressor (A) | 17.5 |
| Fan (A) | 1.2 |

MOP - Maximum Overcurrent Protection MCA - Minimum Circuit Ampacity

Indoor Unit:

| | |
|-------------------------------------|--------------|
| Power Supply (V ¹ /Hz/Ø) | 208-230/60/1 |
| Cooling Power Input (kW) | 4.07 |
| Heating Power Input (kW) | 4.05 |

Piping:

| | |
|-----------------------------------|------|
| Refrigerant Charge (lbs) | 7.49 |
| Liquid Line (in, OD) | 3/8 |
| Suction Line (in, OD) | 5/8 |
| Max Pipe Length (ft) ² | 246 |
| Max Elevation (ft) | 98 |

Features:

- Inverter (Variable speed compressor)
- Internal condensate pump
- Swirl Wind
- Jet Cool
- Independent vane control
- Auto restart
- Auto changeover
- Ultra-quiet turbo fan
- Built-in low ambient standard, down to 5°F (cooling mode)
- Evaporator frost control
- Night Quiet Operation

Included Accessories:

- 7-Day Programmable Controller (White) - PQRCVSL0QW

Required Accessories (sold separately)

- Cassette Grille - PT-UMC

Optional Accessories (sold separately)

- Wireless Handheld Remote Controller - PQWRHDF0
- Plasma Kit - PTPKMO
- Ventilation³ Kit - PTVK410+PTVK420
- Auto Elevation Kit - PTEGMO
- PI485 - PMNFP14A0

For continual product development, LG reserves the right to change specifications without notice.

Operating Range:

Outdoor Unit:

| | |
|-----------------|-------|
| Cooling (°F DB) | 5-118 |
| Heating (°F WB) | 0-64 |

Indoor Unit:

| | |
|-----------------|-------|
| Cooling (°F DB) | 64-90 |
| Heating (°F DB) | 60-77 |

Unit Data:

| | |
|--|----------|
| Refrigerant Type | R410A |
| Refrigerant Control | EEV |
| IDU Sound Pressure (H/M/L) ±3 dB(A) ⁴ | 46/44/40 |
| ODU Sound Pressure Max (Cool/Heat) ±3 dB(A) ⁴ | 52/54 |
| ODU Net Unit Weight (lbs) | 203 |
| ODU Shipping Weight (lbs) | 227 |
| IDU Net Unit Weight | 55 |
| IDU Shipping Weight (lbs) | 67 |
| Grille Weight (lbs) | 11 |
| Grille Shipping Weight (lbs) | 20 |

Fan:

| | |
|----------------------------------|---------------|
| Fan Type | Turbo |
| Air Circulation (CFM H/M/L) | 1,060/989/918 |
| Fan Speeds (Fan/Cooling/Heating) | 4/5/4 |
| Dehumidification (pts/hr) | 7.7 |

Standard Features:

- Limited Seven Year Compressor Warranty
- Limited Five Year Functional Parts Warranty

Notes:

1. Acceptable operating voltage: 187V - 253V.
2. Piping lengths are equivalent.
3. Must comply with applicable codes for fire isolation dampers.
4. Sound pressure levels are tested in an anechoic chamber under ISO Standard 1996.
5. All communication cable to be minimum 18 American wire gage (AWG), 2-conductor, stranded, shielded and must comply with applicable local and national code.
6. This unit comes with a dry helium charge.
7. Nominal data is rated 0 ft above sea level, with 25 ft of refrigerant line and a 0 ft level difference between outdoor and indoor units.
8. Power wiring cable size must comply with the applicable local and national code.
9. Must follow installation instructions in the applicable LG installation manual.



Outdoor Unit (ODU) - LUU427HV

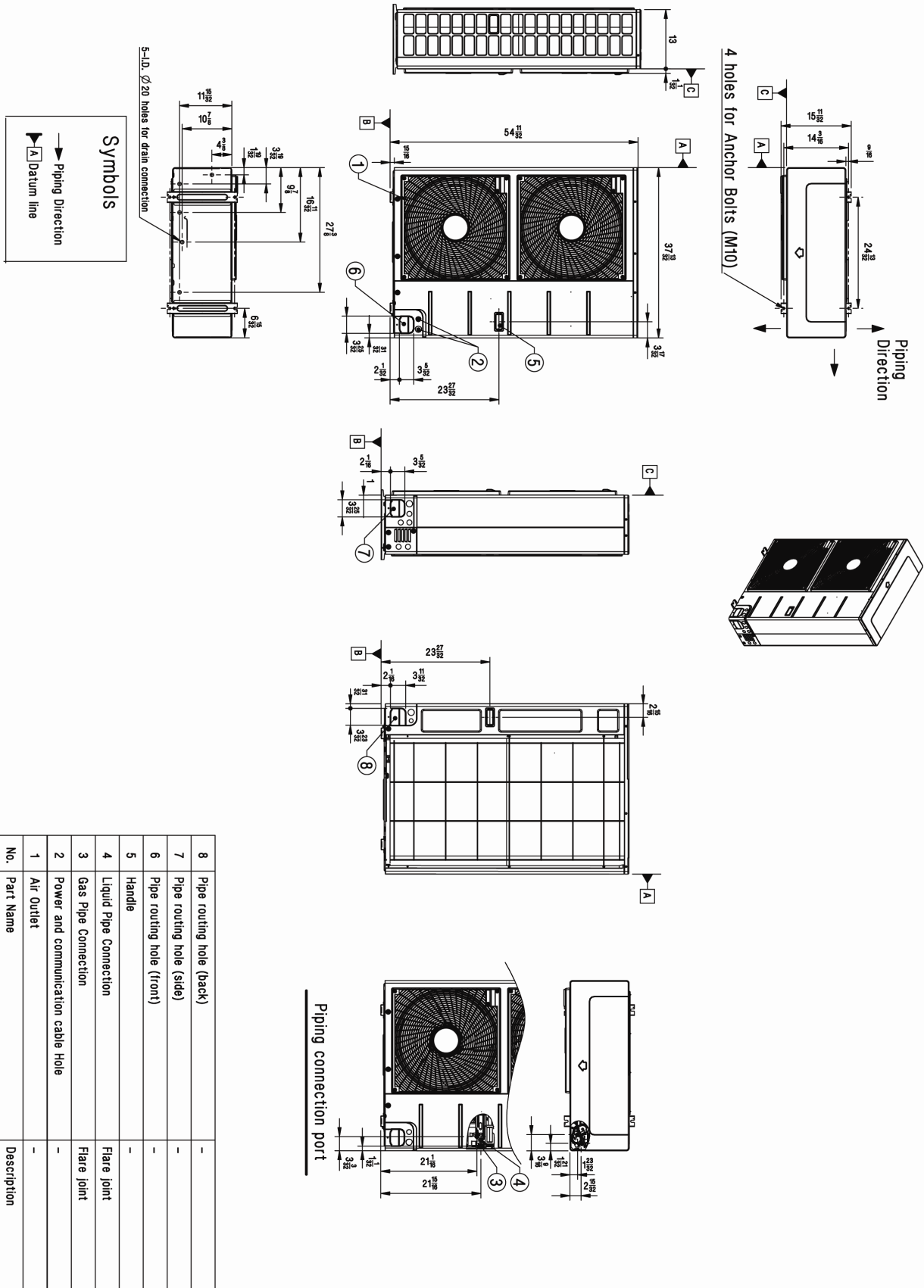
Ceiling Cassette Single Zone



Tag #:

Date:

PO No.:



Indoor Unit (IDU) - LCN427HV

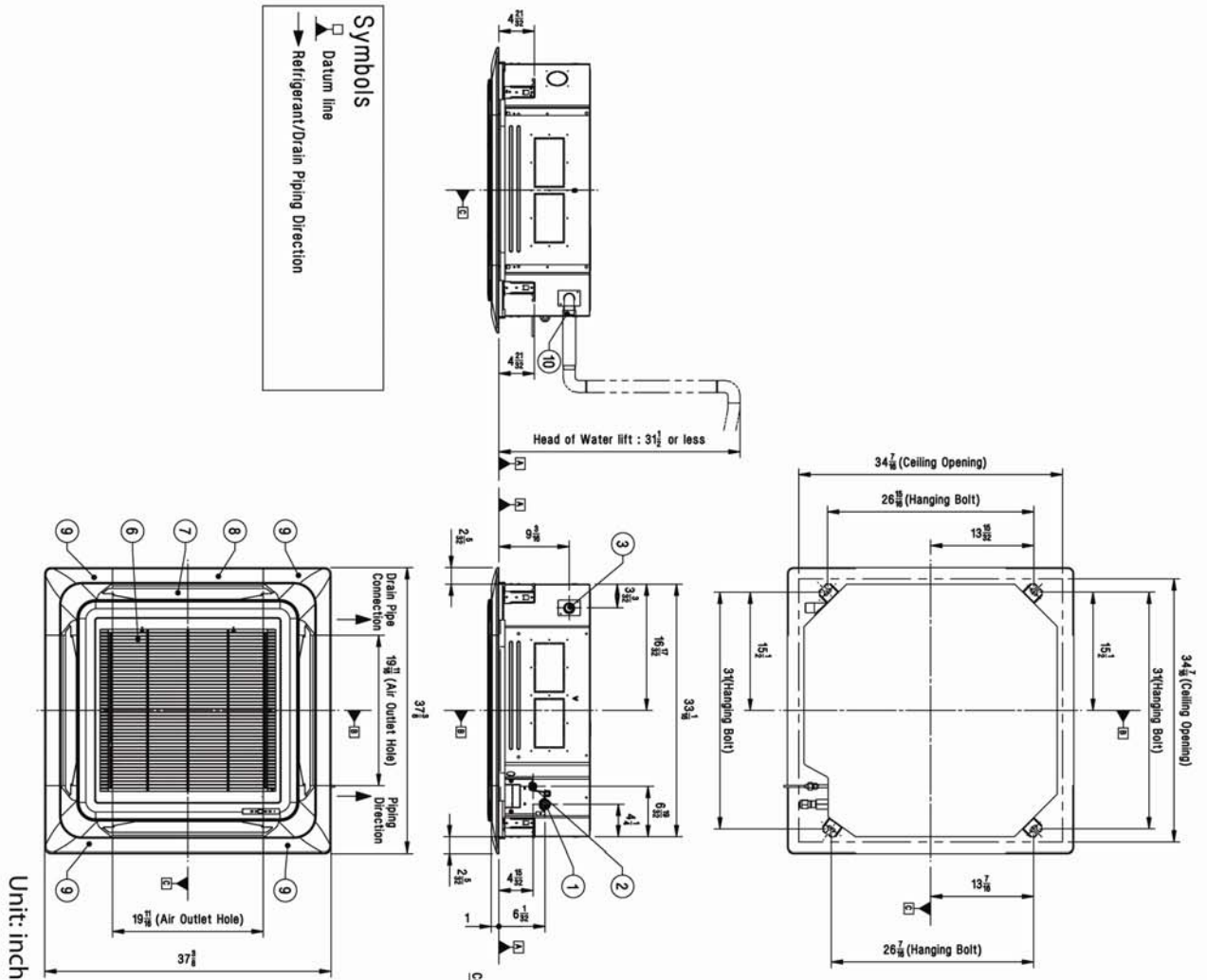
Ceiling Cassette Single Zone



Tag #:

Date:

PO No.:



| No. | Part Name | Description |
|-----|--|-----------------------|
| 10 | Flexible Drain Hose | Supplied with product |
| 9 | Decoration Corner Cover | Supplied with panel |
| 8 | Decoration Panel (Accessory) | PT-UMC |
| 7 | Air Outlet | - |
| 6 | Air Inlet | - |
| 5 | Wired remote controller wire routing hole | - |
| 4 | Power and communication cable routing hole | - |
| 3 | Drain Pipe Connection | - |
| 2 | Liquid Pipe Connection | - |
| 1 | Gas Pipe Connection | - |

