

Sheet Metal Hammers

One-piece steel

One-piece forged, I-beam construction. Full-polished heads with beveled face and pein are corrosion resistant. Hammer sections are individually hardened and tempered for strength and resiliency.



Most Popular!
Easily the most popular choice of sheet metal professionals worldwide, the Malco No. SH3 Setting Hammers leather grip conforms a permanent bond between the users hand for ultimate comfort and ease of use.

SH3
18 oz. (510 g.)

Leather Gripped Setting Hammer

*Grip is protected with a durable lacquer coating.
Leather conforms to hand over time.
Easily, Malco's most popular setting hammer.*

Vinyl Gripped Setting Hammer

Molded-on vinyl grips minimize recoil and offer excellent comfort, non-slip gripping and durability.



SH3V
18 oz. (510 g.)

Leather Gripped Riveting Hammer

*Grip is protected with a durable lacquer coating.
Leather conforms to hand over time.*



RH4
12 oz. (340 g.)

Vinyl Gripped Riveting Hammer

Molded-on vinyl grips minimize recoil and offer excellent comfort, non-slip gripping and durability.



RH4V
12 oz. (340 g.)

Claw Hammer

*Grip is protected with a durable lacquer coating.
Leather conforms to hand over time.*



20SC
20 oz. 567 g.)

Specifications

Catalog Number	Description	Head Weight oz. (g)	Head Length in. (mm)	Face Size in. (mm)	O/A Length in. (mm)
SH3	Leather Gripped Sheet Metal Hammer	18 (510)	5-1/2 (140)	7/8 (22.2)	11-3/4 (298)
SH3V	Vinyl Gripped Setting Hammer	18 (510)	5-1/2 (140)	7/8 (22.2)	11-3/4 (298)
RH4	Leather Gripped Riveting Hammer	12 (340)	4-7/8 (124)	3/4 (19.1)	11 (279)
RH4V	Vinyl Gripped Riveting Hammer	12 (340)	4-7/8 (124)	3/4 (19.1)	11 (279)
20SC	Leather Gripped Claw Hammer	20 (567)	5-5/8 (143)	1-3/16 (30.2)	—

Dead Blow Hammer



- Non-Marring • Non-Sparking • Non-Recoiling

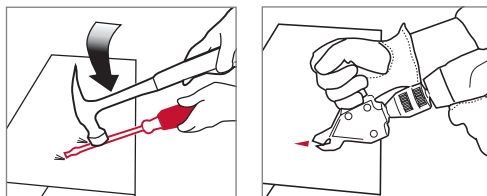
DB1
17 oz. (482 g.)

One piece construction of weather resistant, urethane compound ensures long service life.

- Steel shot inside head absorbs impact to prevent recoil.
- Excellent for working copper, other soft metals and hardened sheet steel including ductwork and auto body panels.
- Flanged handle butt for a more secure grip.

Perfect companion tool to our TS1 metal cutting TurboShear™. Specially angled ground tip easily punctures and rips duct to the desired length starting hole.

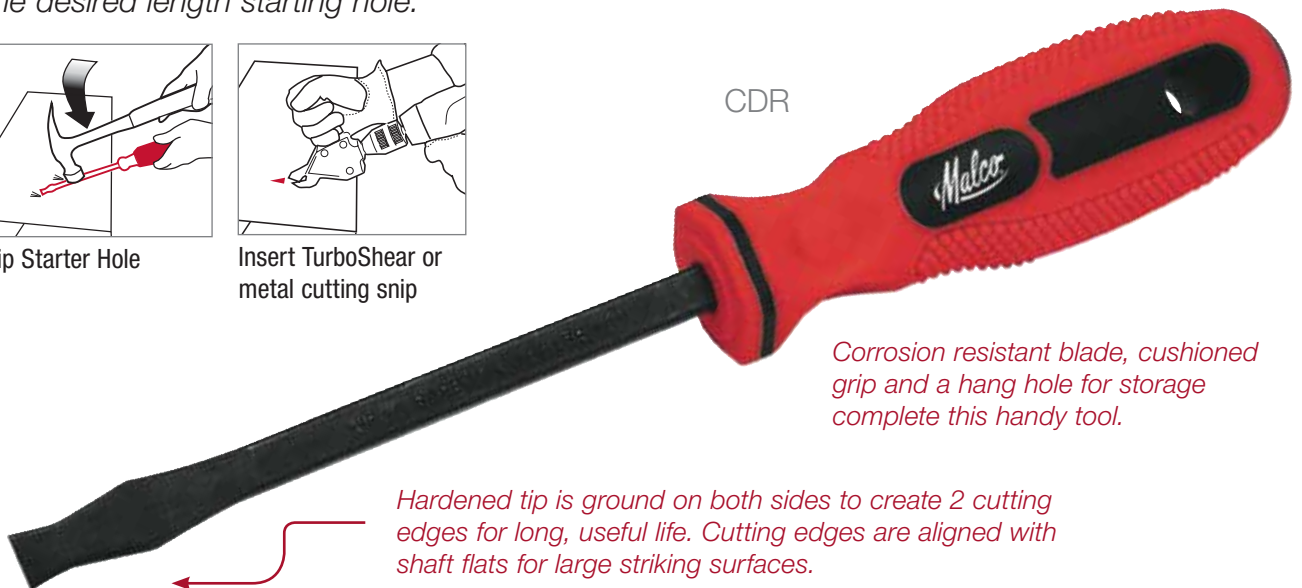
Duct Ripper



Rip Starter Hole

Insert TurboShear or metal cutting snip

CDR



Corrosion resistant blade, cushioned grip and a hang hole for storage complete this handy tool.

Hardened tip is ground on both sides to create 2 cutting edges for long, useful life. Cutting edges are aligned with shaft flats for large striking surfaces.

Specifications

Catalog Number	Description	Claw	Head Weight oz. (g)	Head Length in. (mm)	Cutting Edge in. (mm)	Face Size in. (mm)	O/A Length in. (mm)	Nominal Length in. (mm)	Net Weight oz. (g)
CDR	Duct Ripper	—	—	—	—	—	—	9-1/2 (241)	5 (147)
DB1	Dead Blow Hammer	—	17 (482)	3-1/2 (89)	—	1-1/4 (32)	11 (279)	—	—

Magnetic Tip

Tape Measures

Magnetic Attraction!

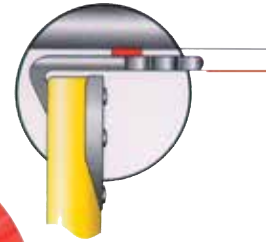
At last, the obvious! Malco's "Magnetic Tip" tape measure is ideal for every ferrous metalworking project! Use it for HVAC ductwork installations, ceiling grid applications, metal stud framing and more. A powerful magnet and self-supporting 1 in. wide blade makes 1-person measurements and measuring elevations an easy task. The magnetic tip and big standout blade can even be used as a pick-up tool! A double riveted tip connection, abrasion-resistant, nylon coated blade and rubber-clad housing and blade stop assure lasting performance.



Powerful Magnets!

Ideal for working with metal!

Zero Commencement:
When Hanging and pulling magnet,
deduct 1/16 in. from measurement.



*A MULTITUDE OF JOB SITE USES: Metal Ductwork | Ceiling Grids
| Metal Stud Framing Measuring Elevations | One-Person Measurements |
Extended blade tip even works as pick-up tool!*

Non-Magnetic Tape Measures

- Non Magnetic 1 in. Tape Measures
- Double Riveted Tip Connection
- Rubber-Clad Housing



Specifications

Catalog Number	Description	Net Wt. oz. (g)
T416M	1 in. x 16 ft. Magnetic Tip Tape Measure	10 (284)
T425M	1 in. x 25 ft. Magnetic Tip Tape Measure	14 (397)
T430M	1 in. x 30 ft. Magnetic Tip Tape Measure	17 (482)
CT425	1 in. x 25 ft. Tape Measure	13 (369)
CT430	1 in. x 30 ft. Tape Measure	16 (454)

48AR



Made from .125 thickness extruded aluminum. This 48 in. rule is 2 in. wide. Large and clear, easy to read, thermo-bonded red markings on gray finish. Can be read from either end. Graduations in eighths and sixteenths.

48BS *Semi-Flexible*48CR *Heavy Duty*

Standard bench rules with circumference readings for sheet metal work. Made from Stainless Steel which means they never need to be oiled. Fully etched markings are black filled for easy reading. 150 circumference inches in 1/8 in. increments both sides. Rules are 48 in. long x 1-1/4 in. wide.

Tinner's Circumference Rules

Distance Measuring Wheels



Ergonomic Pistol Grip offers greater comfort and less wrist fatigue.

MW10
10 in.

Popular 10-inch wheel is versatile for many jobs. Reads up to 10,000 feet.



5-Digit Counters to read up to 10,000 ft. 2-Section Telescoping Handles with positive Clamp-Lock Mechanism.

Polyvinyl wheel treads assure adequate traction on smooth or rough surfaces.



MW19
19 in.

For Accurate Measurements in Most Outdoor Conditions



Applications Include:
Fencing, Paving, Landscaping, Grounds Maintenance, Irrigation, Surveying and Estimating.

- Comfortable Pistol-Grip Handle
- Twist and Lock Telescoping Handle Shaft
- POLYVINYL TREAD for Improved Traction
- Kickstand Molded into Counter-Housing

Specifications

Catalog Number	Description	Upper Scale Graduations (in.)	Lower Scale Graduations	Graduations (in.)	Net Weight lbs. (oz)
48AR	48 in. Straight Edge	—	—	Increments to 1/16	1 (16)
48BS	48 in. Tinner's Circumference Rule (<i>Semi-Flexible</i>)	Increments to 1/16 both sides	150 circumference inches in 1/8 in. increments both sides	—	—
48CR	48 in. Tinner's Circumference Rule (<i>Heavy-Duty</i>)	Increments to 1/16 both sides	150 circumference inches in 1/8 in. increments both sides	—	—

Catalog Number	Description	Wheel Diameter in. (mm)	Nominal Circumference ft.	Storage Length in.	Extended Length in.	Net Weight lbs. (oz)
MW10	10 in. Diameter Measuring Wheel	10 (254)	3	25	41	2.10 (0.95)
MW19	19 in. Diameter Measuring Wheel	19 (483)	5	29	41-3/4	—

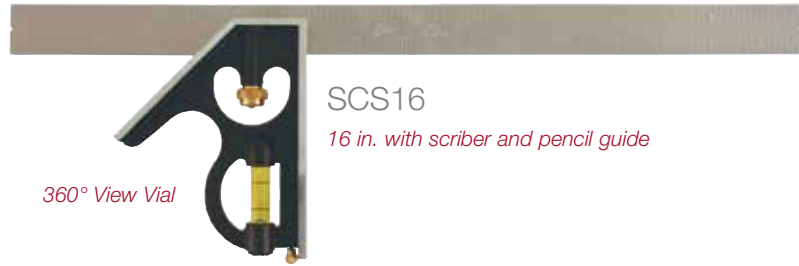
Squares and Levels

Combination Squares

Machined head has self aligning zinc drawbolt for easy blade installation. Satin finish steel blades are precision stamped in eighths and sixteenths on each side. Level vials are durable acrylic. The SCS16 square also features a hardened scriber with brass bushing and pencil guide on blade.



SCS12
12 in. with solid mounted vial



SCS16
16 in. with scribe and pencil guide
360° View Vial

Top Reading Torpedo Levels

Duplex milled aluminum frame with “cyclocac” end plates is lightweight and withstands shock or abuse. Precision cast parallel edges will not scratch work surface. Three large vials - plumb, level and 45°. White vial holders and top read feature facilitate quick, easy reading. Grooved working edge designed for use on pipe and conduit.



L9



L9M

Magnetic Base

Pocket Level

Strong molded plastic frame with pocket clip. Multi view vial reads top, bottom or side. Ideal for leveling thermostats.



L5

Specifications

Catalog Number	Description	Line Length in. (cm)	Number of Vials	Net Weight oz. (g)
L5	Pocket Level	5 (127)	1	—
L9	9 in. Top Reading Torpedo Level	9 (229)	3	—
L9M	9 in. Top Reading Torpedo Level with Magnetic Base	9 (229)	3	—
SCS12	12 in. with solid mounted vial	—	—	12 (340)
SCS16	16 in. with scribe & pencil guide, 360 view vial	—	—	14 (397)