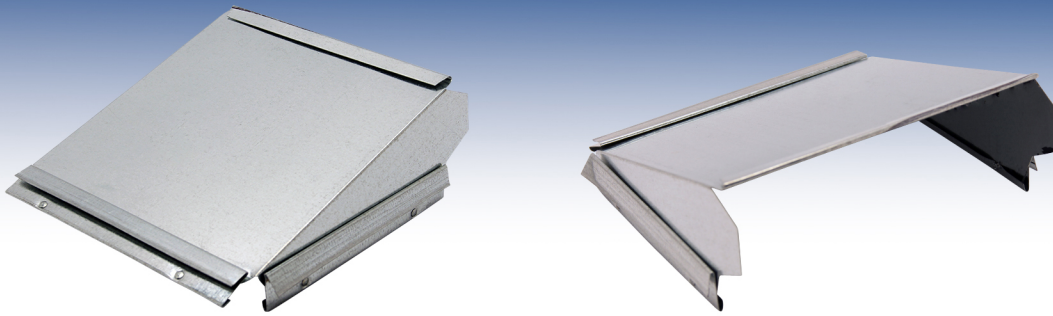


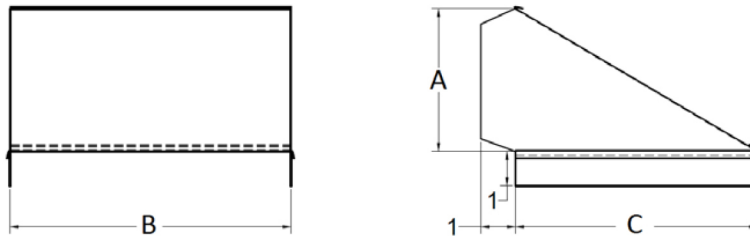


Duct Reducer



Hercules manufactures a duct transition that helps keep static pressure at optimal levels when long duct runs with many different duct taps are present. These transitions come in two forms: 1- Fully assembled, 2- Duct triangles to reduce one side of the duct.

- *Duct Reducers constructed of 24Ga. Galvanized Steel ASTM-A653-00*
- *All gauges and reinforcements are in compliance with 2005 SMACNA standards for duct fabrication*



ITEM	A	B	C
2X8DR	2.125	8.125	7.25
4X8DR	4.125	8.125	7
4X10DR	4.125	10.125	8
6X8DR	6.125	8.125	7.375
6X10DR	6.125	10.125	8

* All dimensions are in inches ±



1-800-870-4305

